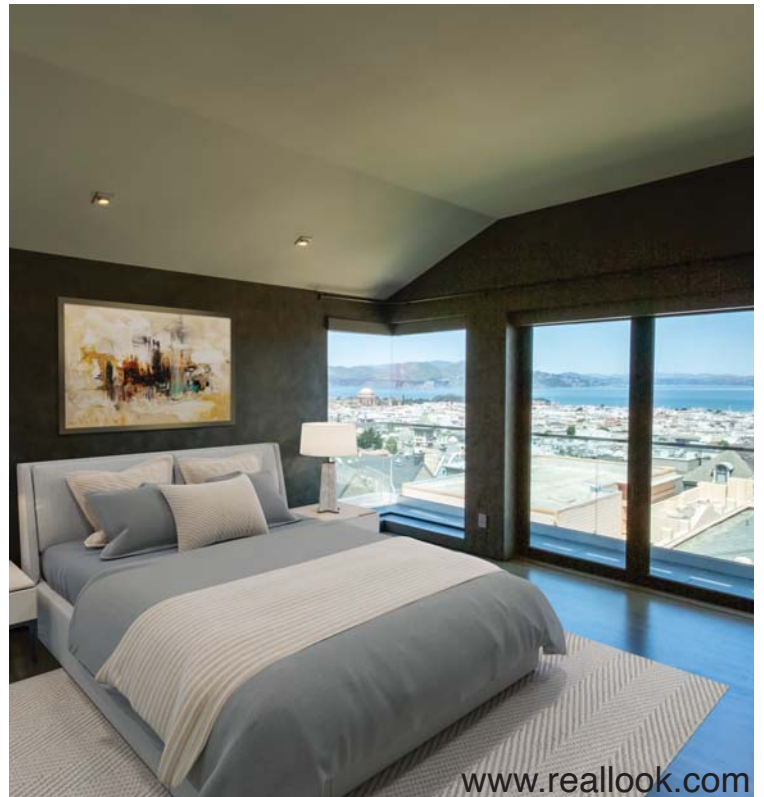


COMPASS



Desirable Pacific Heights
2755 Fillmore Street, San Francisco

4BD 4.5BA 5,142 Sq Ft \$13,999,000 2-Car Garage Pkg

Living Your Best in Prestigious Pacific Heights!



World Class Views & Luxurious Amenities!

98 Walk Score Extensive Renovation in 2012 Terraces on 3-Levels

Views From Every Level www.2755-Fillmore.com

Stunning 4BD/4.5BA, 3 level luxury home in highly desirable Pacific Heights, features iconic views of San Francisco Bay, Alcatraz, Palace of Fine Arts, & Golden Gate Bridge from all levels. Ideally suited for entertaining. Top tier includes open floor plan, living room, dining room & custom master chef's kitchen. Ensuite bedrooms are spread across the tiers. Top level master suite includes terraces, walk in closet, ensuite bath with shower overlooking the Bay. Middle tier includes two bedrooms, one ensuite overlooks a patio terrace with glass fireplace & custom sculpture. Lower tier features a library, custom-built-in bookcases, patio access, wine cellar, ensuite BR, and recreation room. Dramatic home with terraces on all levels. Custom high-end Crestron automation and security system. Multi-level one of a kind custom hanging sculpture. 2-car garage. A walker's paradise at a 98 walk score! Walk to restaurants, shops, Marina Green, Union Street, and the Fillmore District.

AMENITIES:

- 4BD/4.5BA/2-Car Pkg
- World Class Views!
- Renovated in 2012
- Master Chef Kitchen
- Master En-Suite Bedrooms
- Spacious Family Rm/Bdrm
- Library with Custom Shelves
- Patio Access from Library
- Custom Hanging Sculpture
- Hi-End Automation System
- Stylish Wine Cellar
- Home Recreation Room



Betty Taisch
Taisch Team

Luxury Property Specialist
415.385.8780 | taisch.com
betty@taisch.com
DRE 01227574



THE TAISCH TEAM

