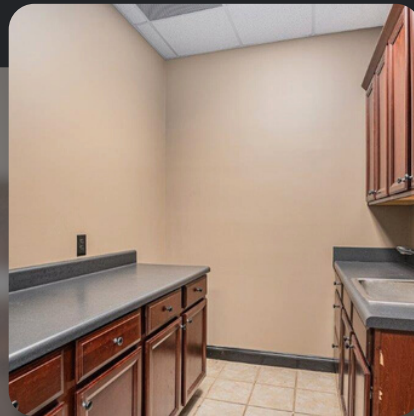
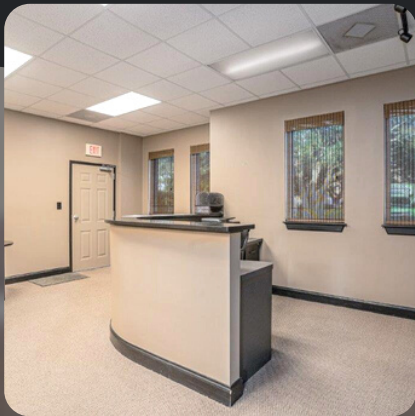


528 JOHNNIE DODDS BLVD, #103, MT. PLEASANT, SC

\$566,500



Fantastic 1399+/- square foot commercial office condominium in a great location in Mt. Pleasant! This space is ready for your business and features a reception area, several offices, a breakroom, a bathroom, and ample parking space. Don't miss the chance to make it yours! Property sold "As-is". Buyer and/or buyer's agent responsible for verifying all pertinent information deemed relevant by the prospective buyer, including but not limited to square footage, acreage, utilities, taxes, permitting, condition, school zones, HOAs, etc.

PARCEL #: 5140000176

BRENDON PAYNE

CENTURY 21 THE HARRELSON GROUP

BRENDON@C21HARRELSON.COM

+1 (843) 222-5771

SC LIC #66802