



PROPERTY DESCRIPTION

3.940% Ownership Offer

PROPERTY HIGHLIGHTS

- 24,050 SF Medical Building located on 4.14 acres
- Investment opportunity in a MOB asset including a fully operational surgical center
- Strong NOI
- Property sold "As-is". Buyer and/or buyer's agent responsible for verifying all pertinent information deemed relevant by the prospective buyer, including but not limited to square footage, acreage, utilities, taxes, zoning, permitting, condition, school zones, HOAs, etc.

DEMOGRAPHICS

	1 MILE	5 MILES	10 MILES
Total Households	512	15,760	27,631
Total Population	1,177	30,093	55,563
Average HH Income	\$62,201	\$42,499	\$45,177

Imagery ©2024 Airbus, Landsat / Copernicus, Maxar Technologies, State of Arkansas, USDA/FPAC/GEO

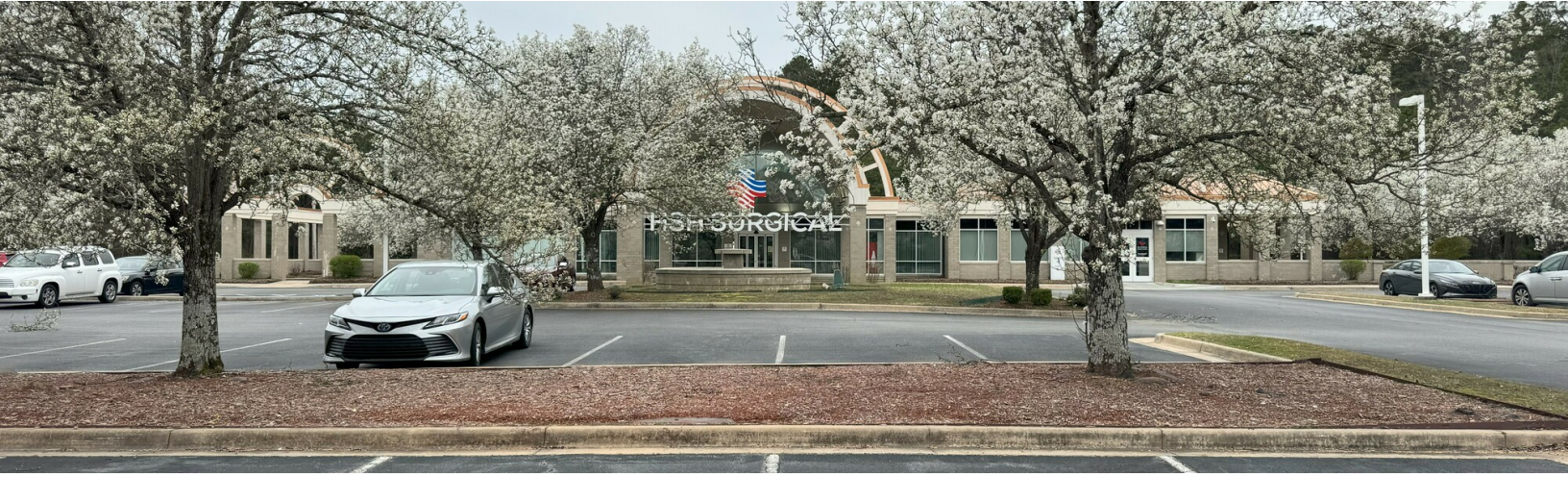
JACOB SPEARS
501.940.7204
jspears@jonesaur.com

7200 S HAZEL ST
PINE BLUFF, AR 71603



JACOB SPEARS
501.940.7204
jspears@jonesaur.com

7200 S HAZEL ST
PINE BLUFF, AR 71603



JACOB SPEARS
501.940.7204
jspears@jonesaur.com

7200 S HAZEL ST
PINE BLUFF, AR 71603



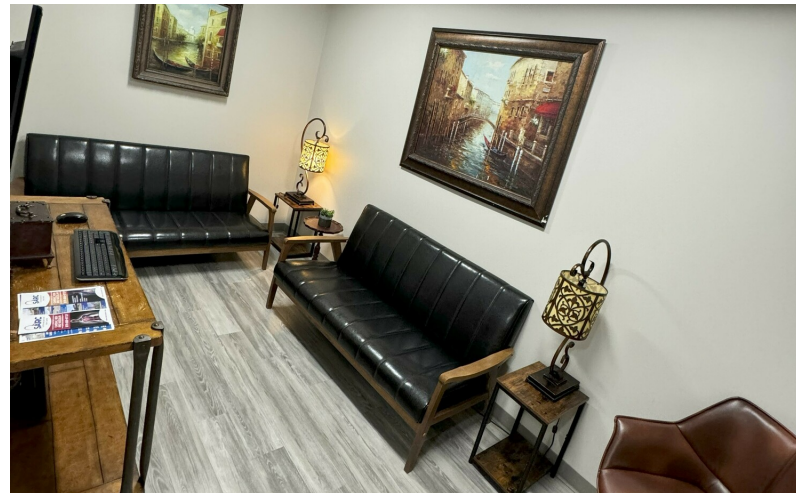
JACOB SPEARS
501.940.7204
jspears@jonesaur.com

7200 S HAZEL ST
PINE BLUFF, AR 71603

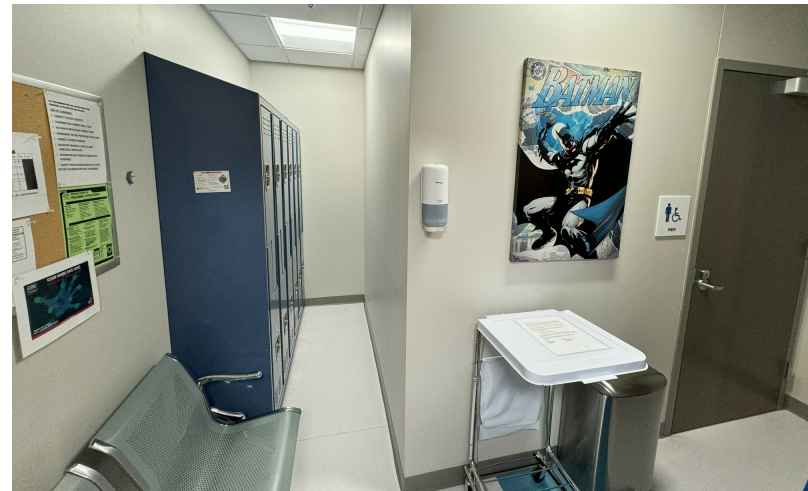


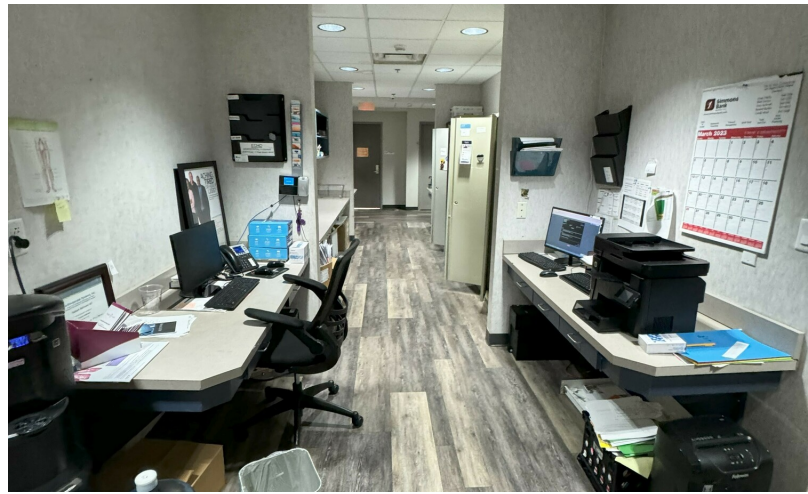
JACOB SPEARS
501.940.7204
jspears@jonesaur.com

7200 S HAZEL ST
PINE BLUFF, AR 71603



JACOB SPEARS
501.940.7204
jspears@jonesaur.com





7200 S HAZEL ST
PINE BLUFF, AR 71603



JACOB SPEARS
501.940.7204
jspears@jonesaur.com