



2060 CR 2027 **Glen Rose**

 DouglasElliman





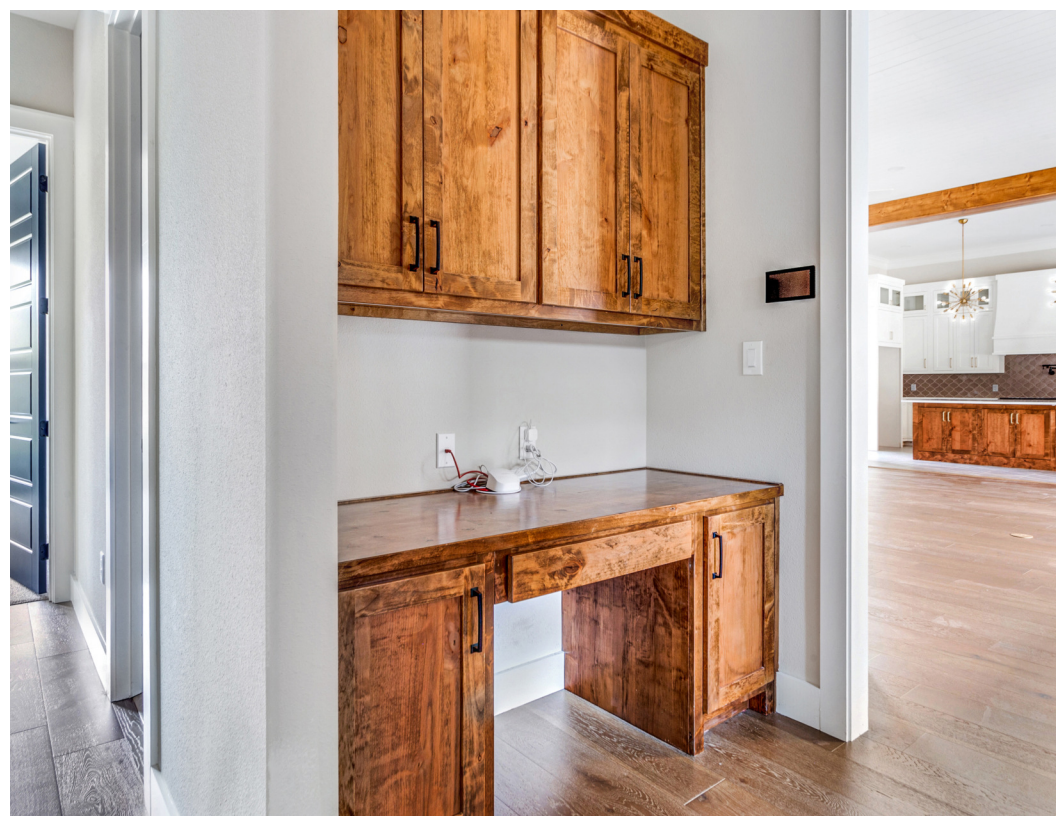
## Country Living at it Finest

**2060 CR 2027 | Glen Rose**  
**4 BR, 3 BA | Approx. 3,256sf**

Modern elegance meets country tranquility on 6.03 acres! This stunning single-story home welcomes you with a grand foyer, 12' ceilings, and custom lighting showcased in the office and dining room. The open-concept family room features a gas log fireplace with a striking wood mantle, flowing seamlessly into the Chef's Dream Kitchen—complete with stainless steel appliances, dual sinks, and heated floors designed for comfort and entertaining. The primary suite offers an ensuite spa-like bath with separate vanities, a soaking tub, walk-in shower with body spray, and an expansive custom closet with built-ins throughout. Each guest bath also features heated floors for year-round comfort. Step outside to your private backyard oasis with a full outdoor kitchen, fireplace, and grill. Enjoy a serene country setting just minutes from Dinosaur World and only an hour from Waco or two hours from Dallas.















**Don Davis**  
**Broker Associate**  
Don Davis Realty Group  
at Douglas Elliman  
936.494.5500  
don.davis@elliman.com



2001 KIRBY DRIVE, SUITE 600, HOUSTON, TX 77098 281.652.5588 © 2025 DOUGLAS ELLIMAN REAL ESTATE. ALL MATERIAL PRESENTED HEREIN IS INTENDED FOR INFORMATION PURPOSES ONLY WHILE, THIS INFORMATION IS BELIEVED TO BE CORRECT, IT IS REPRESENTED SUBJECT TO ERRORS, OMISSIONS, CHANGES OR WITHDRAWAL WITHOUT NOTICE. ALL PROPERTY INFORMATION, INCLUDING, BUT NOT LIMITED TO SQUARE FOOTAGE, ROOM COUNT, NUMBER OF BEDROOMS AND THE SCHOOL DISTRICT IN PROPERTY LISTINGS SHOULD BE VERIFIED BY YOUR OWN ATTORNEY, ARCHITECT OR ZONING EXPERT. IF YOUR PROPERTY IS CURRENTLY LISTED WITH ANOTHER REAL ESTATE BROKER, PLEASE DISREGARD THIS OFFER. IT IS NOT OUR INTENTION TO SOLICIT THE OFFERINGS OF OTHER REAL ESTATE BROKERS. WE COOPERATE WITH THEM FULLY EQUAL HOUSING OPPORTUNITY.

THIS REPRESENTS AN ESTIMATED SALE PRICE FOR THIS PROPERTY. IT IS NOT THE SAME AS THE OPINION OF VALUE IN AN APPRAISAL DEVELOPED BY A LICENSED APPRAISER UNDER THE UNIFORM STANDARDS OF PROFESSIONAL APPRAISAL PRACTICE.

Texas Consumer Protection Notice

Texas Real Estate Commission Information About Brokerage Services