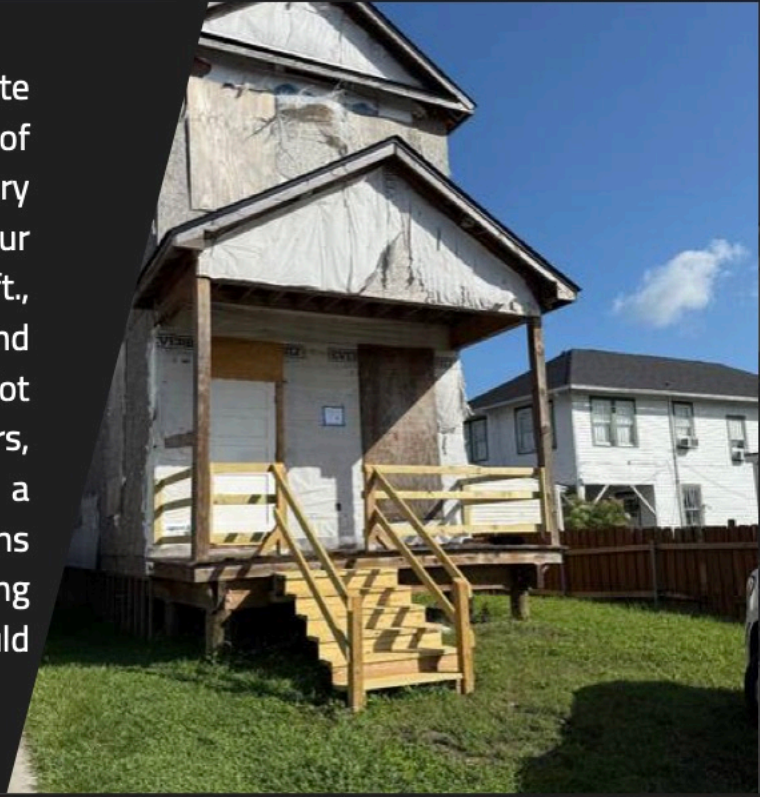


1725 Paul Morphy St New Orleans, LA

\$238,000

Situated just 2 miles from the Lafitte Greenway and within easy reach of Bayou St. John, this raised two-story structure offers a blank slate for your vision. With a lot size of 4,350± sq.ft., there's room to shape the home and outdoor space to fit your needs. This lot and structure is for builders, investors, or homeowners ready to take on a project in a New Orleans neighborhood. Whether you're restoring to resell, rent, or reside-this one could be worth the effort.



Barbara Bonnette

Louisiana Outdoor Properties, Inc.

318-876-2622

318-308-6614