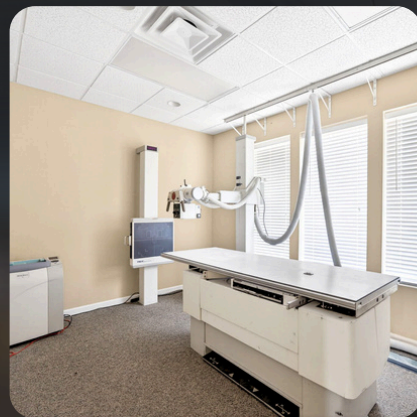
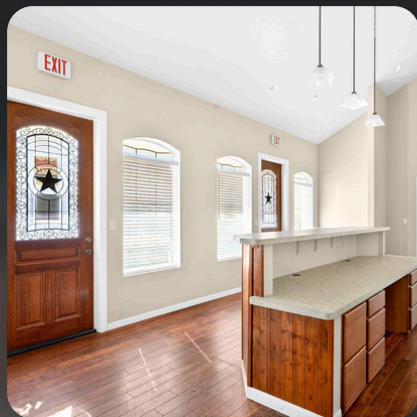




**4230 GARDENDALE ROAD, SAN ANTONIO, TX**

**\$715,000**



Positioned in the heart of San Antonio's highly sought-after Medical District, this 2,708 SF medical office suite at 4230 Gardendale Rd, Unit 3, San Antonio, TX 78229 offers an exceptional opportunity for medical and professional users seeking a turnkey or easily adaptable space. The well-designed floor plan features a welcoming reception and waiting area, multiple private offices and exam rooms, dedicated procedure/treatment rooms, restrooms, and a functional breakroom/kitchen area. The layout supports efficient patient flow and operational flexibility, making it ideal for a wide range of medical or dental uses, including primary care, specialty practices, imaging, therapy, or outpatient services. Interior finishes include durable flooring, ample natural light, built-in cabinetry, and existing medical infrastructure that can significantly reduce buildout time and cost. The suite also includes additional storage and a second-floor storage area, adding valuable functionality rarely found in comparable properties. Located minutes from major hospitals, research facilities, and I-10, Loop 410, and US 281, this property provides excellent accessibility for patients and staff alike.

PARCEL #: 1018638

MCKENZIE PEEK

+1 (512) 787-0407

BROKER ID: 741951