

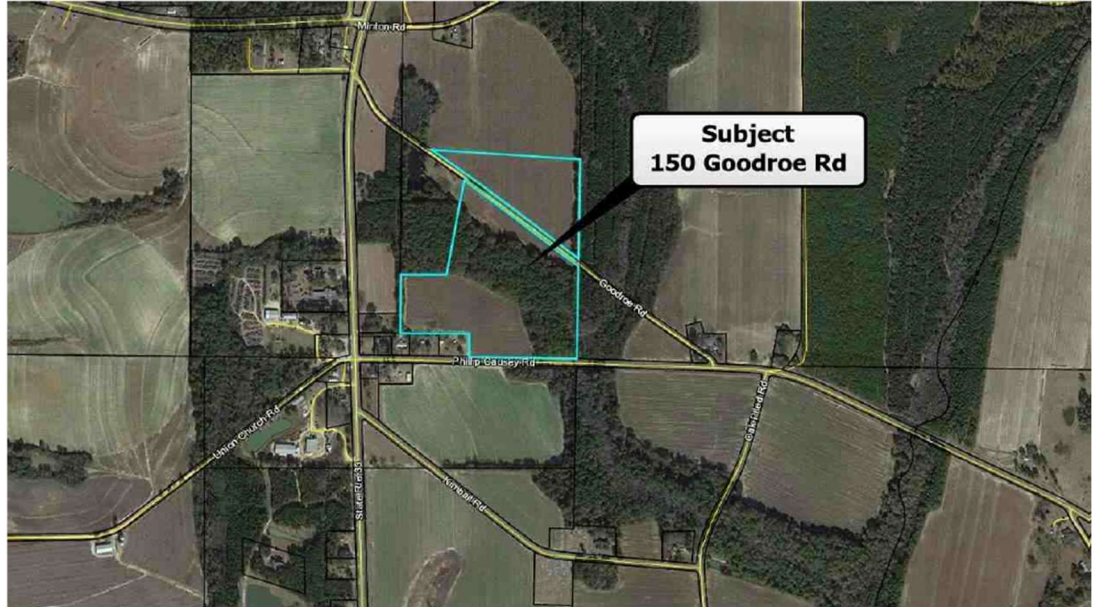
For
SALE

Contact Office for Price

Agricultural Land
44.63+/- Acres
Moderate Timber
Tillable Farm Land
Level Topography

Parcel ID:
00640071

44.63 +/- Tillable Acres



150 Goodroe Road | Sylvester, GA 31744

Features Include: 44.63+/- tillable acres with moderate timber. Topography is generally level with tons of road frontage!

Additional Information: This property is just one out of 105 properties being offered for sale resulting from a US Marshals seizure of Christopher Whitman properties. Don't miss the opportunity to build your rental and/or development portfolio from this rare government sale of real estate.



Justin Ochs, VP of National Development | **800-729-6466** | info@soldoncompass.com