

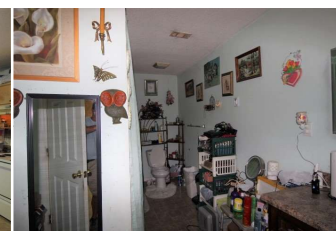
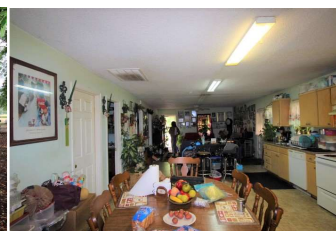
For
SALE

Contact Office for Price

Multi-Family Duplex
Year Built Approx. 1955
5 Total Bedroom(s)
3 Total Bath(s)
Approx. 2,593+/- sq. ft.
Forced Air Heat
Central Air
Covered Porches
Lot approx. 0.34 Acres
Open Kitchen
Mature Trees

Parcel ID:
SV130075

2,500+ Multi-Family Duplex



304 East St | Sylvester, GA 31791

Features Include: 2,593 SF duplex on 0.34+/- Acres with 5 bedrooms/3 baths total. Mature trees with well maintained landscaping and fenced yard. The interior includes an open kitchen with large living area. Great addition to your rental portfolio.

Additional Information: This property is just one out of 105 properties being offered for sale resulting from a US Marshals seizure of Christopher Whitman properties. Don't miss the opportunity to build your rental and/or development portfolio from this rare government sale of real estate.

Justin Ochs, VP of National Development | [800-729-6466](tel:800-729-6466) | info@soldoncompass.com