

For
SALE

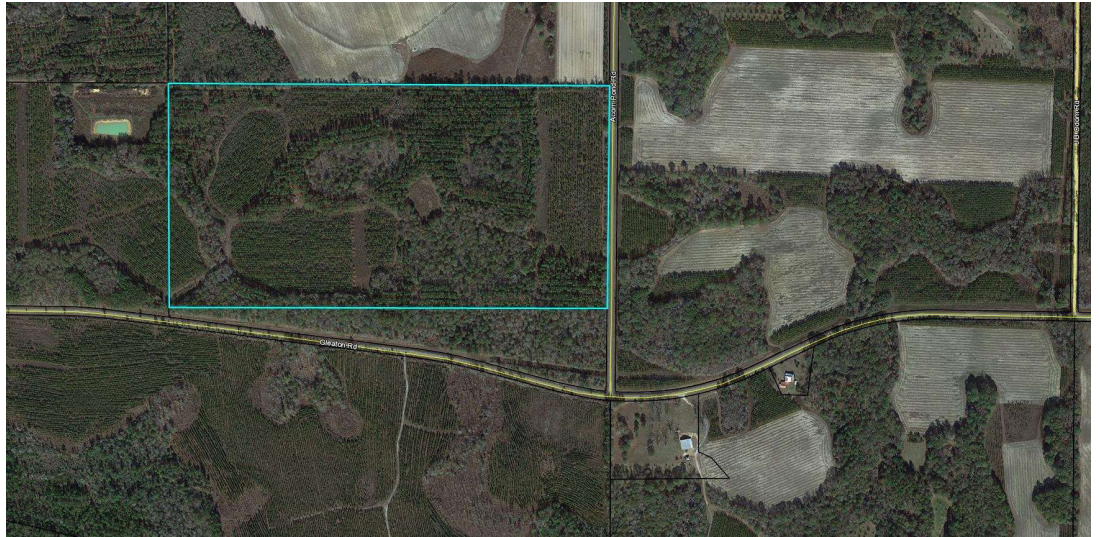
Contact Office for Price

Agricultural Land
102.47+/- Acres
1,515+/- FT Road Front
Moderate to Heavy
Timber
Gently Rolling
Topography

Parcel ID:
0053001600A

Location:
About 5 miles southeast
of Warwick, on the north
side of Gleaton Road,
approximately 1.5 miles
west of Hwy 313.

102.47+/- Acres of Agricultural Land



Lot 231 of 14th Land District | Warwick, GA 31796

Features Include: 102.47+/- acres in Warwick, GA. Rectangular tract with moderate to heavy timber. Topography is gently rolling with 1,515 +/- feet of road frontage.

Additional Information: This property is just one out of 105 properties being offered for sale resulting from a US Marshals seizure of Christopher Whitman properties. Don't miss the opportunity to build your rental and/or development portfolio from this rare government sale of real estate.



Justin Ochs, VP of National Development | [800-729-6466](tel:800-729-6466) | info@soldoncompass.com