

For  
SALE

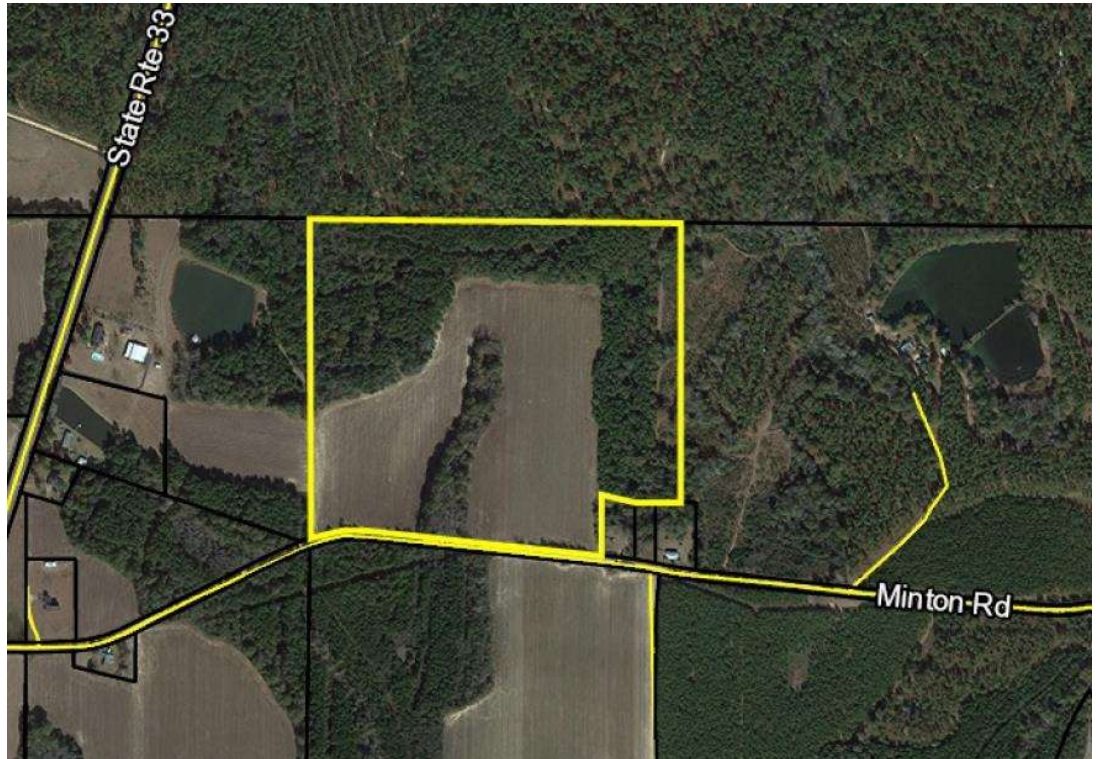
## Contact Office for Price

Tillable Farm Land  
62.274+/- Acres  
1,500+/- FT Road Front  
Moderate Timber  
Level Topography

Parcel ID:  
00640026

Location:  
About ½ mile north of  
Anderson City, on the  
north side of Minton  
Road, approximately ½  
mile east of Hwy 313.

## 62.274+/- Acres of Tillable Farm Land



### Parcel 26 LL82 of 7<sup>th</sup> District | Sylvester, GA 31791

**Features Include:** 62.274+/- acres in Worth County, GA. Tillable farm land with moderate timber. Square tract with nearly 1,500+/- feet of road frontage.

**Additional Information:** This property is just one out of 105 properties being offered for sale resulting from a US Marshals seizure of Christopher Whitman properties. Don't miss the opportunity to build your rental and/or development portfolio from this rare government sale of real estate.



Justin Ochs, VP of National Development | [800-729-6466](tel:800-729-6466) | [info@soldoncompass.com](mailto:info@soldoncompass.com)