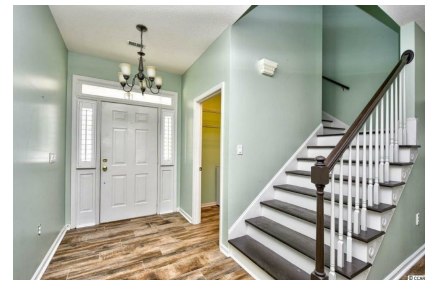




© CCAR



ON THE MARKET

## 214 TRADITION CLUB DR. PAWLEYS ISLAND 29585

A true must see! This charming 3-bedroom 2 bathroom is located on a beautiful lot in the Tradition golf course community and has wonderful features! The moment you step through the doors into the large foyer you will fall in love. Arched door openings, high ceilings and windows and doors with transoms that allow for so much warm natural light are just part of the great features in this home. Fantastic open floor plan includes a spacious living room and a large kitchen with a breakfast nook plus lots of cabinet and counter space. The master bedroom suite includes a bath with double sinks, a vanity, separate shower, and garden tub. The other bedrooms are also spacious, and all have ceiling fans. The enclosed porch is the perfect spot to relax plus there is also a patio for grilling. Tradition is one the most popular communities in the area and owners enjoy wonderful amenities including a pool, tennis, recreation facilities and private access to Litchfield By The Sea. Dont miss the chance to own this fabulous home in a great

**\$506,000**

**MLS# 2225303**

**3 Beds**

**2.0 Baths**

**Approx. Size: 2,631 sqft**

**Lot: 0.39 acres**



**BRENDON PAYNE**

**Mobile 843-222-5771**

**brendonppayne@gmail.com | <http://brendonpayne-theharrelsongroup.sites.c21.homes>**

**CENTURY 21 THE HARRELSON GROUP 4999 Carolina Forest Blvd, Myrtle Beach, SC 29579**

**CENTURY 21**  
The Harrelson Group



© 2022 Century 21 Real Estate LLC. All rights reserved. CENTURY 21®, the CENTURY 21 Logo and C21® are registered service marks owned by Century 21 Real Estate LLC. Century 21 Real Estate LLC fully supports the principles of the Fair Housing Act and the Equal Opportunity Act. Each office is independently owned and operated. If your property is not listed with a real estate broker affiliated with the CENTURY 21 Brand, please disregard. It is not our intention to solicit the offerings of other real estate brokers.