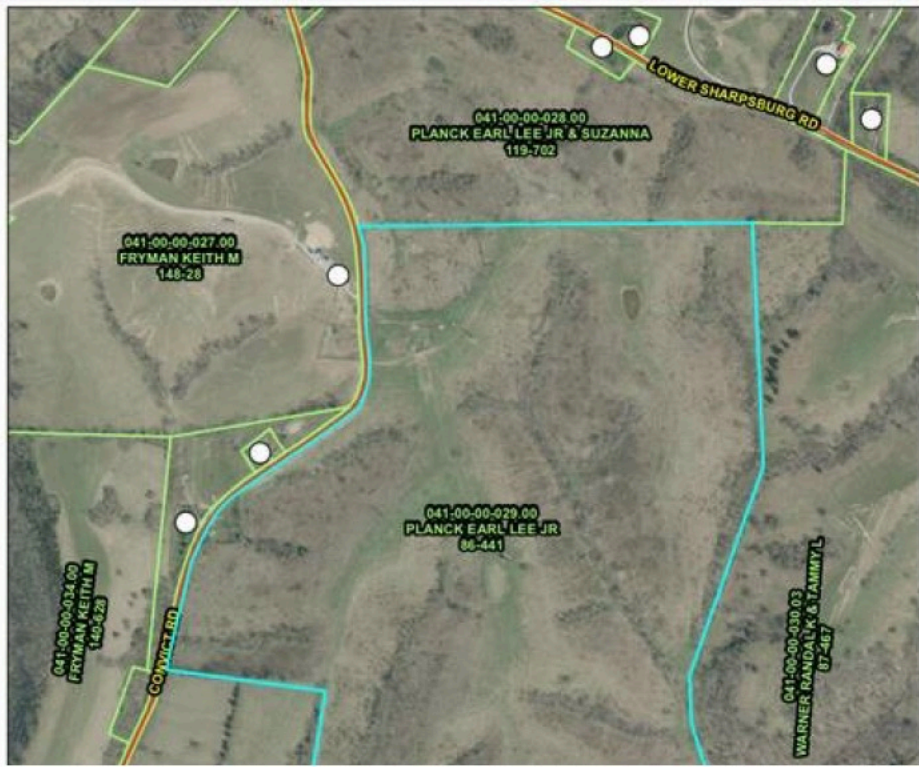


0 Convict Road Sharpsburg, KY

\$484,000



"Property sold "As-is". Offering 125 +/- acres of prime agricultural land, this expansive property is ideal for farming, livestock, or future development. With open, productive fields and ample space for crops or grazing, it presents a great opportunity for agricultural use or investment. The land features easy access and a rural setting while still being convenient to nearby towns and markets, making it a versatile and valuable piece of farmland.



Josh Abner
ATLAS Real Estate & Auction Services



270-839-3136



Jabner.atlas@gmail.com