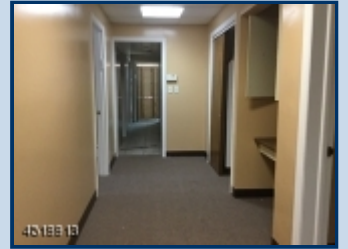




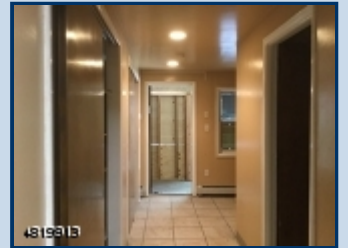
4619913



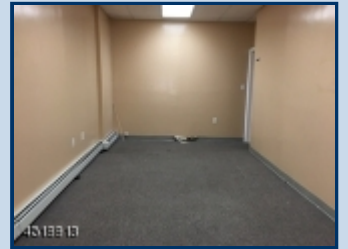
4519913



4519913



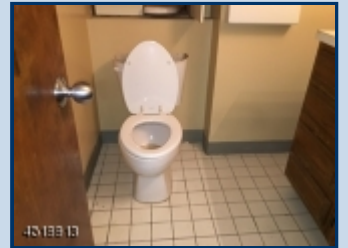
4519913



4519913



4519913



4519913



EQUAL HOUSING
OPPORTUNITY

430-432 MORRIS AVE*
Elizabeth City* (2904)

\$434,500

MLS#:	3485670	Zoned:	NA
For Sale/Lease:	S	Taxes:	\$14,372
# Stories:	2	Tax Year:	2017
# Units:	1	Avail SqFt:	0
# of Lavs:	2	Bldg SqFt:	0
Prop Type:	Mixed Use		
Parking:	/ Parking Lot-Shared		
Heat:	Forced Hot Air		
Cool:	No Cooling		
Water:	Public Water		
Sewer:	Public Sewer		
Directions:	From Garden State Pkwy, take ramp right on US-22 E. Bear right on Morris Ave, & keep straight.		

Don't miss out on this Morris Ave 2 story commercial building with rear parking in the HEART OF ELIZABETH....tons of possibilities! So much space and potential! This commercial building features a reception area, separate offices, kitchenette, and 2 bathrooms. This is the perfect building to expand your business. Great Investment opportunity!! Being sold AS IS, WHERE IS, Buyer is responsible for all inspections, CO and certifications. All information and property details are deemed reliable but not guaranteed and should be independently verified if any person intends to engage in a transaction based upon it. All room dimensions are approximate & need to be verified by buyer.