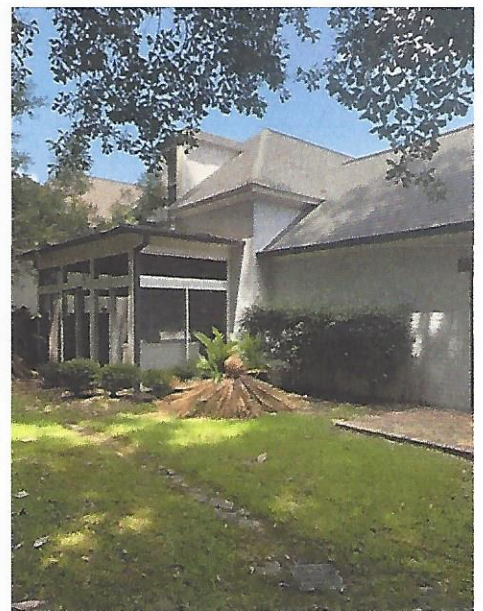
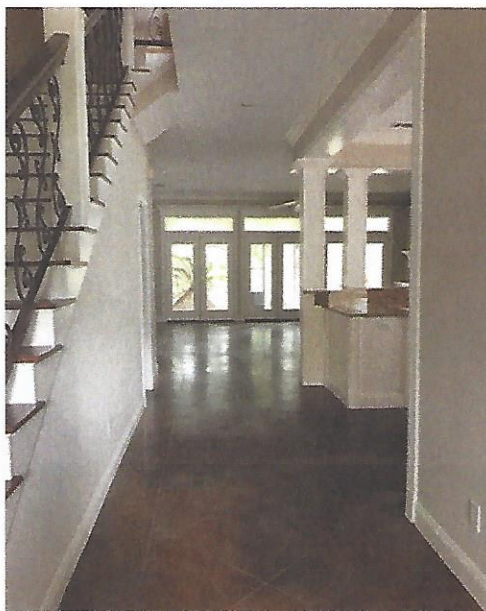


**19 CRANE PARK,
HATTIESBURG, MS 39402**

**OFFERED BY
POPLARVILLE
REALTY, INC**

**ELAINE SONES
BROKER/OWNER
601-795-9215**



ALMOST 3100 SQ. FT. OF HEATED LIVING SPACE. 3 BEDROOMS, 3.5 BATHS. OPEN FLOOR PLAN FOR FAMILY LIVING. LOCATED CLOSE TO SHOPPING, SCHOOLS, AND MEDICAL FACILITIES! PRESTIGIOUS LAKE DEVELOPMENT OFFERING GOLFING AND BOATING. AVAILABLE WITH COUNTRY CLUB MEMBERSHIP! TAX PARCEL 101G-01-055.000

CONTACT US FOR MORE INFORMATION

601-795-9215 / 601-590-3140